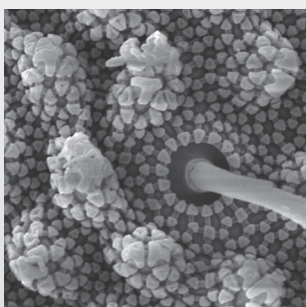


Living up to Life

Leica
MICROSYSTEMS

Material
Research



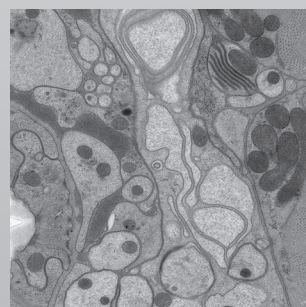
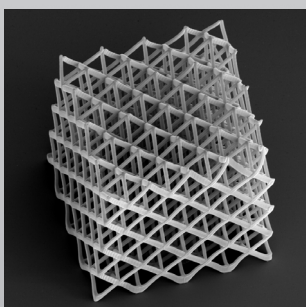
Life Science
Research

Application Note

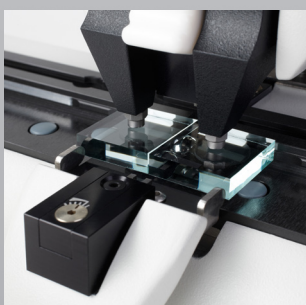
Cross Section of Glass Fibres Reinforced Polyamide

related instrument Leica EM TIC020, Leica EM TIC3X

Medical
Research



Industrial
Manufacturing



Natural
Resources



Cross Section of Glass Fibres Reinforced Polyamide

Market: Polymer industry, Research Institutes, Universities

PROBLEM

The fragile glass fibre gets broken during mechanical polishing. A lot of cracks and broken fibres influence the image analysis.

GOAL

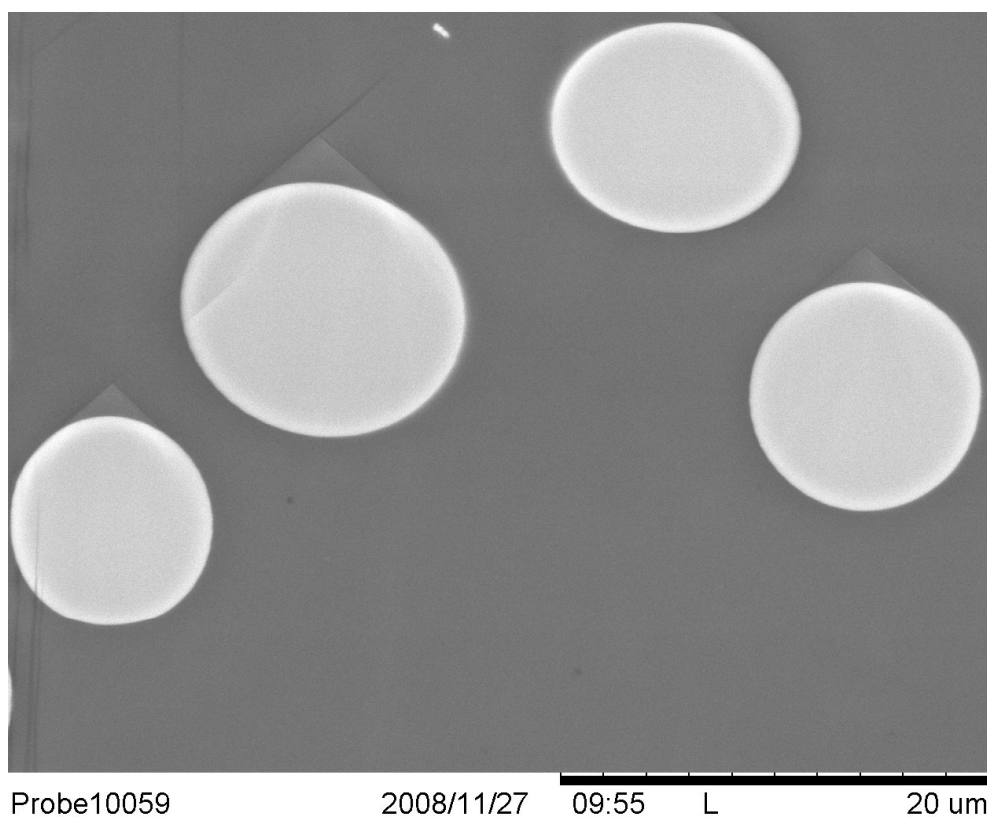
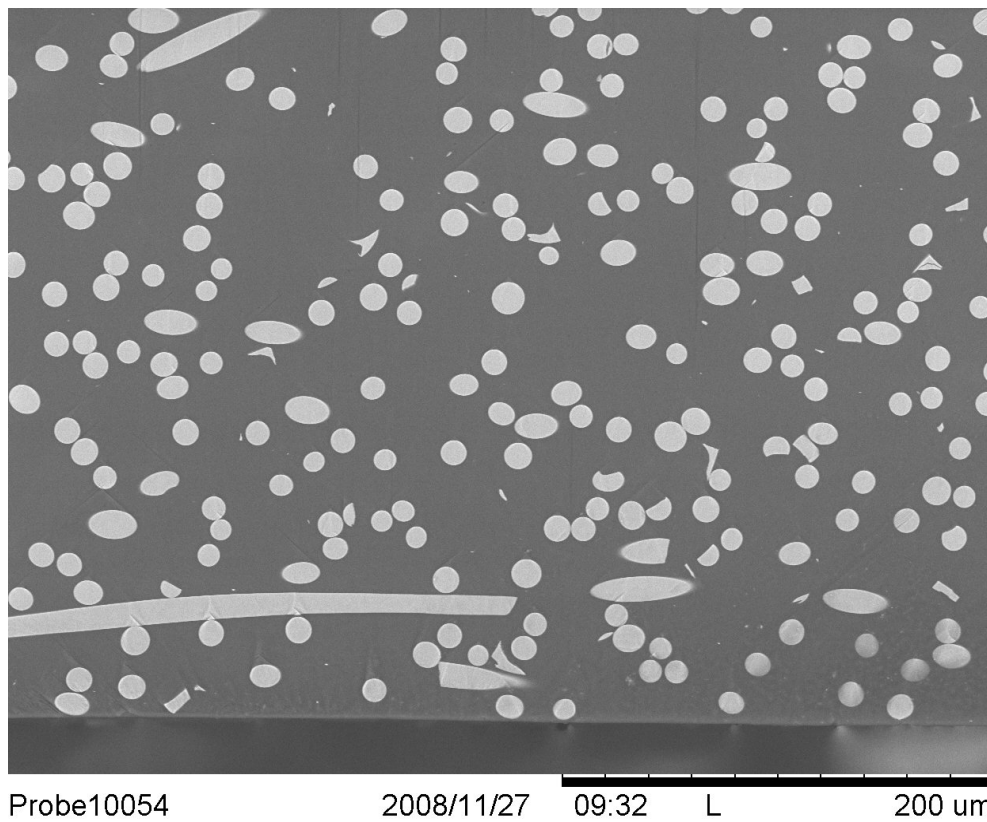
Cross section of glass fibre reinforced polyamide to make a high accuracy image analysis of the glass fibres.

Process description (benchmark values for this particular sample):

Parameter	
Acceleration voltage	6 kV
Gun current	2.3mA
Milling time	2.5 h
Cut depth	300 µm
Pre-preparation	EM TXP (6µm diamond)

RESULTS

No cracks are visible on single fibres in the cross section, which would occur by mechanical preparation. The image analysis can be done at a high accuracy level, as there are no cracks which would divide the glass fibre into surreal amount.



RELATED PRODUCTS



Leica EM TIC020



Leica EM TIC3X

The statement by Ernst Leitz in 1907, *"With the User, For the User,"* describes the fruitful collaboration with end users and driving force of innovation at Leica Microsystems. We have developed five brand values to live up to this tradition: Pioneering, High-end Quality, Team Spirit, Dedication to Science, and Continuous Improvement. For us, living up to these values means: **Living up to Life.**

LIFE SCIENCE DIVISION - NANO TECHNOLOGY LNT

The Leica Microsystems Nano Technology Division's focus is to provide the most comprehensive product portfolio for the preparation of biological, medical and industrial samples for investigation in the Electron and Light Microscope. Excellent Sample Preparation is a prerequisite for perfect microscopy. **Your image starts here!**

Leica Microsystems – an international company with a strong network of worldwide customer services:

Active worldwide	Tel.	Fax
Australia · North Ryde	+61 2 8870 3500	2 9878 1055
Austria · Vienna	+43 1 486 80 50 0	1 486 80 50 30
Belgium · Diegem	+32 2 790 98 50	2 790 98 68
Canada · Concord/Ontario	+1 800 248 0123	847 405 0164
Denmark · Ballerup	+45 4454 0101	4454 0111
France · Nanterre Cedex	+33 811 000 664	1 56 05 23 23
Germany · Wetzlar	+49 64 41 29 40 00	64 41 29 41 55
Italy · Milan	+39 02 574 861	02 574 03392
Japan · Tokyo	+81 3 5421 2800	3 5421 2896
Korea · Seoul	+82 2 514 65 43	2 514 65 48
Netherlands · Rijswijk	+31 70 4132 100	70 4132 109
People's Rep. of China · Hong Kong	+852 2564 6699	2564 4163
· Shanghai	+86 21 6387 6606	21 6387 6698
Portugal · Lisbon	+351 21 388 9112	21 385 4668
Singapore	+65 6550 5999	6773 0628
Spain · Barcelona	+34 93 494 95 30	93 494 95 32
Sweden · Kista	+46 8 625 45 45	8 625 45 10
Switzerland · Heerbrugg	+41 71 726 34 34	71 726 34 44
United Kingdom · Milton Keynes	+44 800 298 2344	1908 246312
USA · Buffalo Grove/Illinois	+1 800 248 0123	847 405 0164